

INNOVATIVE FEATURES

• **HIGH EFFICIENCY:**

High efficiency means cooler internal alternators operating temperatures resulting in less engine horsepower required and maximizing fuel savings. Our unique air flow design offers a more efficient air flow through the windings which directly translates in maximum output and efficiencies.

• **TEMPERATURE RATING:**

All our alternators are validated to work and operate in today's ambient air temperatures of up to 125°C / 257°F

• **DEBRIS FREE & COOLER OPERATION:**

For high debris or high temperature environments, all DelStar series alternators are available with an optional Air Intake Cover by adding the letter "D" after the part No. The Ducted air allows filtered or fresh air flow to the unit which will improve output, efficiency and extends the alternator service life.

• **SOFT START DELAY (SSD) & LOAD RESPONSE CONTROL (LRC):**

Again "SETTING the STANDARD" with a newly introduced SMART REGULATOR where at engine start up, the regulator monitors the (low) engine RPM, it controls and gradually introduces alternator output to eliminate engine torque decrement due to a sudden and abrupt load transition at low RPM.

• **OVERVOLTAGE SHUT-DOWN (OSD):**

Designed to protect onboard electronics that are very sensitive to high voltage conditions, by shutting down the alternator output and restoring output only when the voltage is stabilized to or below the regulator voltage set point.

APPLICATIONS:

- School & Shuttle Buses
- Marine & Mining
- Emergency Vehicles
- Utility Vehicles
- Agricultural & Industrial
- Construction

WARRANTY: 3 Years Limited Warranty

The DelStar Series alternators are an integral charging system of an innovative brushless design. The compact, heavy duty construction, provides increased service life expected to match the longer maintenance intervals of today's engines, while providing a performance level without parallel.

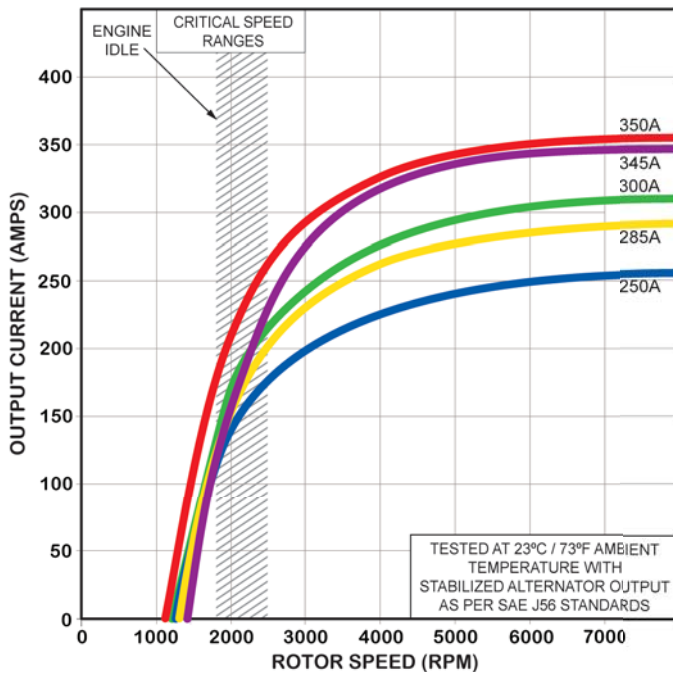




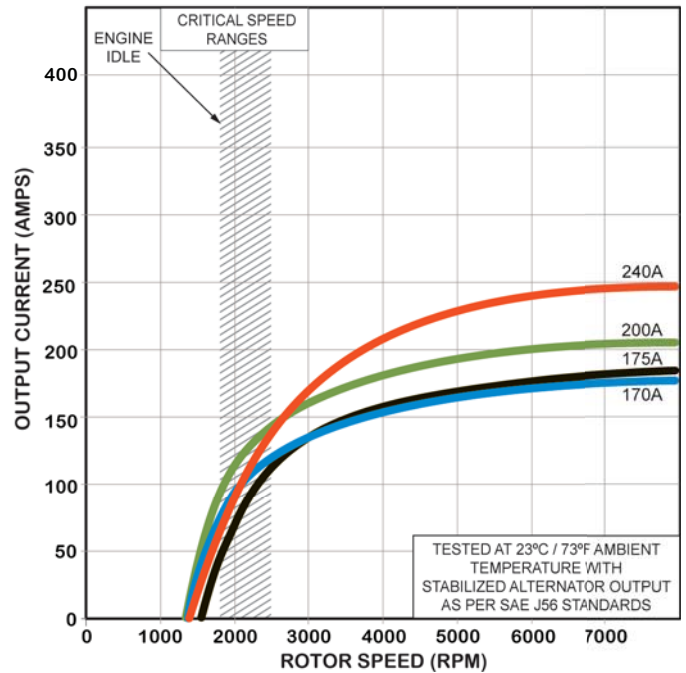
SPECIFICATIONS

- SAE J180 4" Hinge & Pad mounts.
- Ground: Isolated
- Rotation: Bidirectional
- Temperature limits:
Low -40°C / -40°F
High 125°C / 257°F
- RPM limits: 8,000 RPM continuous
9,000 RPM intermittent
- Corrosion-Resistant E-Coated
- Weight: 38 Lbs. / 17.4 Kg.
- Internal Voltage Regulator
- Self-Excited
- Indicator Light
- Remote Sense
- Soft Start Delay (SSD)
- Load Response Control (LRC)
- Field Short Circuit Protection
- Load Dump Protection
- Overvoltage Shut-Down (OSD)

PERFORMANCE CURVES - 12V

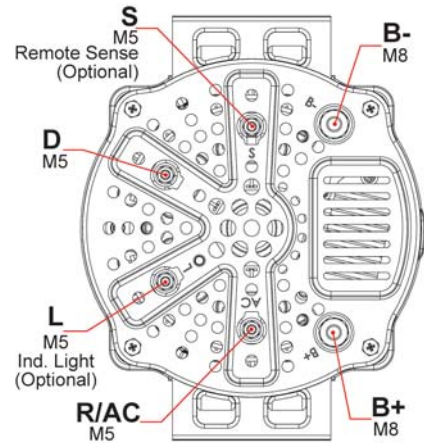
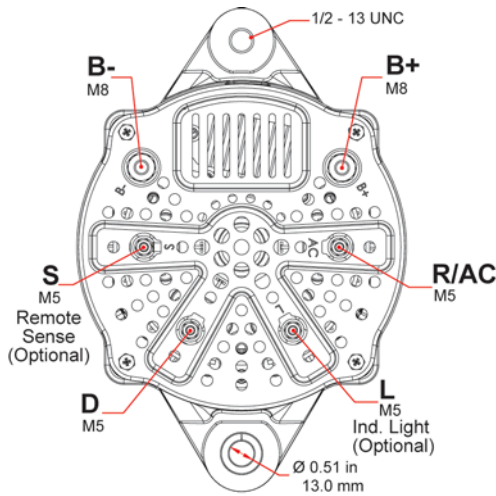


PERFORMANCE CURVES - 24V

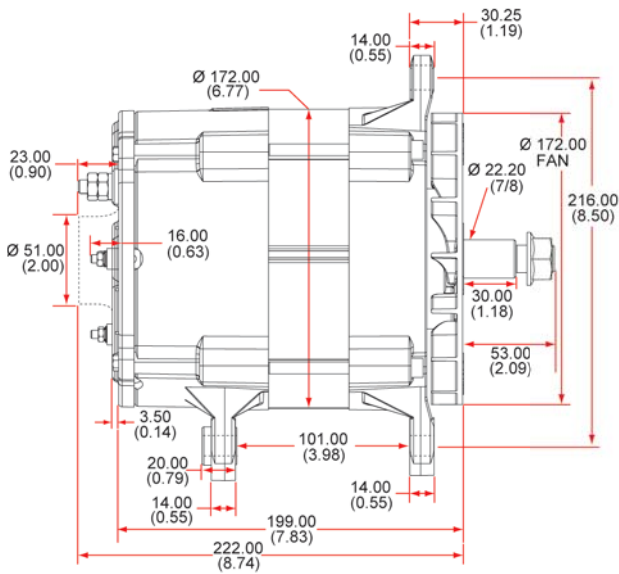


HD Brushless

CONNECTIONS

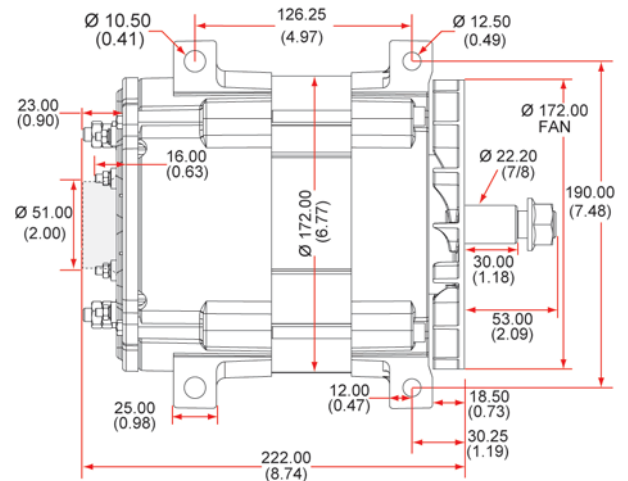


J180 4" Hinge Mount



OUTLINE

PAD Mount



Dimensions are listed in mm over (in)

J180 ALTERNATOR No.	Series	Amps Output @ 2000 / 6000 rpm		
------------------------	--------	----------------------------------	--	--





100-17102,-D	170	12V	210 / 350A	Negative
100-17105,-D	170	12V	210 / 350A	Ins. Grd., Ext.V.Reg.
100-17106,-D	170	12V	170 / 300A	Negative
100-17107,-D	171	12V	145 / 250A	Negative
100-17108,-D	171	12V	157 / 375A	Negative
100-17109,-D	171	12V	150 / 285A	Negative
100-17202,-D	170	24V	114 / 200A	Ins. Grd.
100-17203,-D	170	24V	95 / 170A	Ins. Grd.
100-17204,-D	170	24V	90 / 240A	Ins. Grd.
100-17206,-D	170	24V	114 / 200A	Ins. Grd., Ext.V.Reg.
100-17207,-D	170	24V	95 / 170A	Ins. Grd., Ext.V.Reg.
100-17208,-D	170	24V	90 / 240A	Ins. Grd., Ext.V.Reg.
100-17209,-D	171	24V	70 / 175A	Ins. Grd.

PAD ALTERNATOR No.	Series	Amps Output @ 2000 / 6000 rpm		
-----------------------	--------	----------------------------------	--	--

100-17112,-D	170	12V	210 / 350A	Ins. Grd.
100-17113,-D	171	12V	145 / 250A	Negative
100-17115,-D	170	12V	170 / 300A	Negative
100-17116,-D	170	12V	210 / 350A	Ins. Grd., Ext.V.Reg.
100-17117,-D	171	12V	157 / 375A	Negative
100-17119,-D	171	12V	150 / 285A	Negative
100-17212,-D	170	24V	114 / 200A	Ins. Grd.
100-17213,-D	170	24V	95 / 170A	Ins. Grd.
100-17214,-D	170	24V	90 / 240A	Ins. Grd.
100-17216,-D	170	24V	114 / 200A	Ins. Grd., Ext.V.Reg.
100-17217,-D	170	24V	95 / 170A	Ins. Grd., Ext.V.Reg.
100-17218,-D	170	24V	90 / 240A	Ins. Grd., Ext.V.Reg.
100-17219,-D	171	24V	70 / 175A	Ins. Grd.

NOTE: Add suffix "-D" for optional air intake cover

COMPETITIVE INTERCHANGE

DELSTAR Brushless				Delco Remy Brushless		Leece-Neville Brush Design		C.E. Niehoff Brushless	
Mounting	Part No.	Series	Amps Output @ 2000 / 6000 rpm	40SI Series Part No.	Amps Output @ 2000 / 6000 rpm	4000 Series Sales No.	Amps Output @ 2000 / 6000 rpm	C Series Part No.	Amps Output @ 2000 / 6000 rpm
	100-17113	171	12V 145 / 250A	8600338	100 / 240A	4940PA	125 / 200A		
						4948PA			
PAD	100-17119	171	12V 152 / 285A	8600094	100 / 275A	4951PAH	140 / 220A		
						4958PA			
	100-17115	170	12V 170 / 300A	8600298	125 / 300A	4959PA	140 / 245A	C524	180 / 300A
						4911PA			
	100-17117	171	12V 157 / 345A	8600628	150 / 320A	4913PA	124 / 240A		
						4913PA			
	100-17112	170	12V 210 / 350A	8600628	150 / 320A	BLP4007H*	150 / 320A		
						BLP4004A*			
	100-17212	170	24V 114 / 200A			4962PA, H	150 / 270A		
						4962PGH			
	100-17107	171	12V 145 / 250A	8600390	100 / 240A	4942PA	100 / 200A		
						4947PA			
J180 4" Hinge	100-17109	171	12V 152 / 285A	8600280	100 / 275A	4984PA	100 / 190A	C528	24V 100 / 175A
						4980PAH			
	100-17106	170	12V 170 / 300A	8600280	100 / 275A	4989PAH	150 / 320A	C330	160 / 250A
						4989PGH			
	100-17108	171	12V 157 / 345A	8600634	150 / 320A	4860JB	125 / 200A		
						4861JB			
	100-17102	170	12V 210 / 350A	8600634	150 / 320A	4863JB	140 / 220A		
						4868JGH			
	100-17202	170	24V 114 / 200A			4884JB	140 / 245A		
						4885JB			
						4887JB	150 / 270A		
						4869JB			
						4873JB	150 / 270A		
						4871JB			
						4818JB	150 / 270A		
						4867JB			
						4870JB	150 / 320A		
						4871JB			
						4890JB, H	100 / 200A		
						4817JB			
						4890JB, H	100 / 200A		
						4817JB			
						4740JB	100 / 200A		

* Brushless Design

For additional cross reference information visit our website e-Cat: www.dixie-electric.com

No. 9800-DELA-170 150615

CANADA

Dixie Electric Ltd.
517 Basaltic Road
Concord, ON.
Canada L4K 4W8

Tel.: 905-879-0533 800-461-5799
Fax: 905-879-0532
E-Mail: sales@dixie-electric.com
Web Site: www.dixie-electric.com



U.S.A.

Dixie Electric Inc.
17100 Medina Rd, Suite 100
Minneapolis, MN.
U.S.A. 55447-1249

Tel.: 763-475-6629 800-478-0608
Fax: 763-475-6635 800-392-8719
E-Mail: mn.sales@dixie-electric.com
Web Site: www.dixie-electric.com